



## HYDROMETEOROLOGICAL SERVICE OF GUYANA

### FARMER'S MONTHLY WEATHER BULLETIN

To observe, archive and understand Guyana's weather and climate and provide meteorological, hydrological and oceanographic services in support of Guyana's national needs and international obligations.

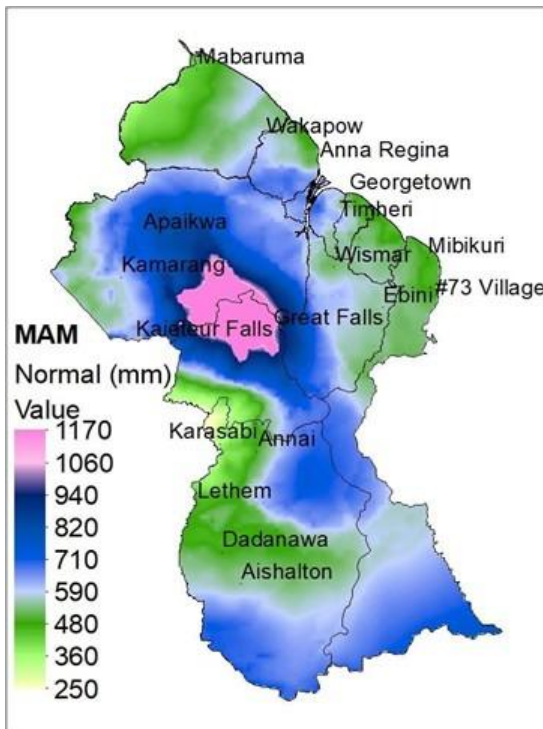
### HIGHLIGHTS: March-April-May 2026

- **Rainfall across Guyana is expected to be below to near normal during the March–May 2026 season.**
- **Rainfall frequency is expected to gradually increase from February through April, leading to improved soil moisture recharge, particularly across regions 2, 3, 4, 5, and 6.**
- **Above-normal temperatures are likely during the season, increasing evapotranspiration and heat stress risk.**
- **Rising humidity levels are likely to elevate fungal disease, while pasture growth conditions are expected to progressively improve into April.**
- **Relatively dry conditions are expected early in the season, with rainfall increasing toward May as the ITCZ moves northward.**
- **Weak La Niña conditions are likely with 60% probability that neutral conditions will prevail during the March–May 2026 season.**

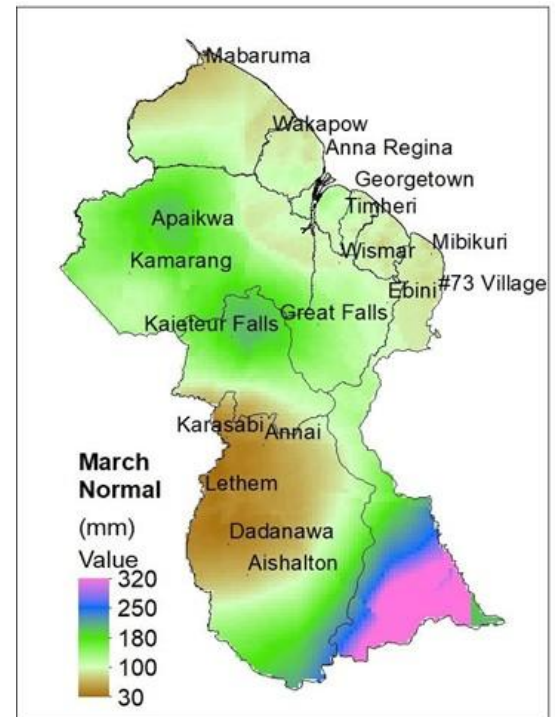


## Seasonal Rainfall Outlook (March-May 2026)

This season indicates a greater likelihood that all regions are most likely to experience below-normal to near-normal rainfall during the March–May season. Early in the season, especially in March, generally dry conditions with occasional rainfall. Farmers are advised to consider land preparation and all other agronomic activities that are conducive during the period. As the season moves into April and May the ITCZ should drift northward, bringing more moisture and more frequent showers and marking the gradual start of the main rainy season in May. Extension officers and farmers are advised to pay attention to the weather updates from the Hydrometeorological Service.



**Fig 1: Normal Accumulated Rainfall for March-May.**



**Fig 2: Normal Accumulated Rainfall for March.**

Seasonal and monthly climatological normal are like baselines for weather in a specific location. They act as crucial reference points for understanding. By comparing current weather to the normal, we can see if conditions are unusually warm, dry, or wet. This helps identify unusual weather events and potential impacts on agriculture and water resources.

## CHANCE OF RAINFALL IN RELATION TO CROP WATER NEEDS FOR March 2026

TABLE:1 Probability of rainfall exceedance in relation to the minimum water requirement for the growing period of selected crops

Crops	Days to Maturity	Minimum Water Requirement	Hossororo	Somerset	St. Cuthberts	Black Bush
Bora (Yard-long bean)	45–60 days	350 mm	25%	35%	45%	35%
Ochro	50–65 days	400 mm	17%	30%	39%	30%
Callaloo	25–40 days	250 mm	50%	61%	60%	56%
Pak Choi	30–45 days	400 mm	17%	30%	39%	30%
Cucumber	50–70 days	600 mm	2%	11%	13%	9%
Sweet Pepper	70–90 days	700 mm	0%	2%	3%	1%
Tomato	70–95 days	800 mm	0%	0%	0%	0%
Pumpkin	90–120 days	500 mm	9%	32%	30%	20%
Sweet Corn	90–110 days	800 mm	0%	0%	0%	0%
Black-eyed Peas	60–75 days	500 mm	9%	32%	30%	20%
Cassava (Butterstick)	240–360 days	1,000 mm	0%	0%	0%	0%
Plantain	9–12 months	2,000 mm	0%	0%	0%	0%
Eddoes (Taro)	180–240 days	1,500 mm	0%	0%	0%	0%

# ADVICE FOR FARMERS

## March 2026 Season

**RAINDAYS**  
**TABLE 2: AVERAGE RAIN**  
**DAYS**  
**FOR March-May 2026 OF**  
**SELECTED STATIONS**

**Alert (Below Normal rainfall conditions expected)**

### Farmer Advisory (Based on Seasonal Outlook)

- Rainfall is expected to be near normal to below normal in many areas.
- Implement efficient irrigation systems to optimize water usage.  
Consider investing in water storage facilities like tanks or ponds to store rainwater during wet days for use during dry periods/spells.
- Livestock may experience hoof problems, parasites, and heat stress during humid days.

Stations	Mar	Apr	May
Mabaruma	10	11	20
Anna Regina	7	7	15
Leonora	9	12	9
Georgetown	10	12	20
Timerhi	11	13	21
Kamarang	13	15	24
Lethem	3	9	18
McKenzie	11	13	19
Ebini	12	15	20

### Recommended Crops for the March Season

- Corn
- Blackeye
- Bora
- Callaloo
- Cucumber
- Sweet Pepper
- Pak Choi
- Cow Pea
- Eddoes



This bulletin is issued by the Hydrometeorological Service of Guyana. We appreciate and welcome any feedback, suggestions, or comments. Please direct all correspondence to the Chief Hydrometeorological Officer at [cho.guyana@gmail.com](mailto:cho.guyana@gmail.com) or to the Agrometeorologist at [dwayne.lanferman@yahoo.com](mailto:dwayne.lanferman@yahoo.com). For more information, visit our website at [www.hydromet.gov.gy](http://www.hydromet.gov.gy). You can also reach us by phone at (592)-225-9303 or fax at (592)-226-1460.